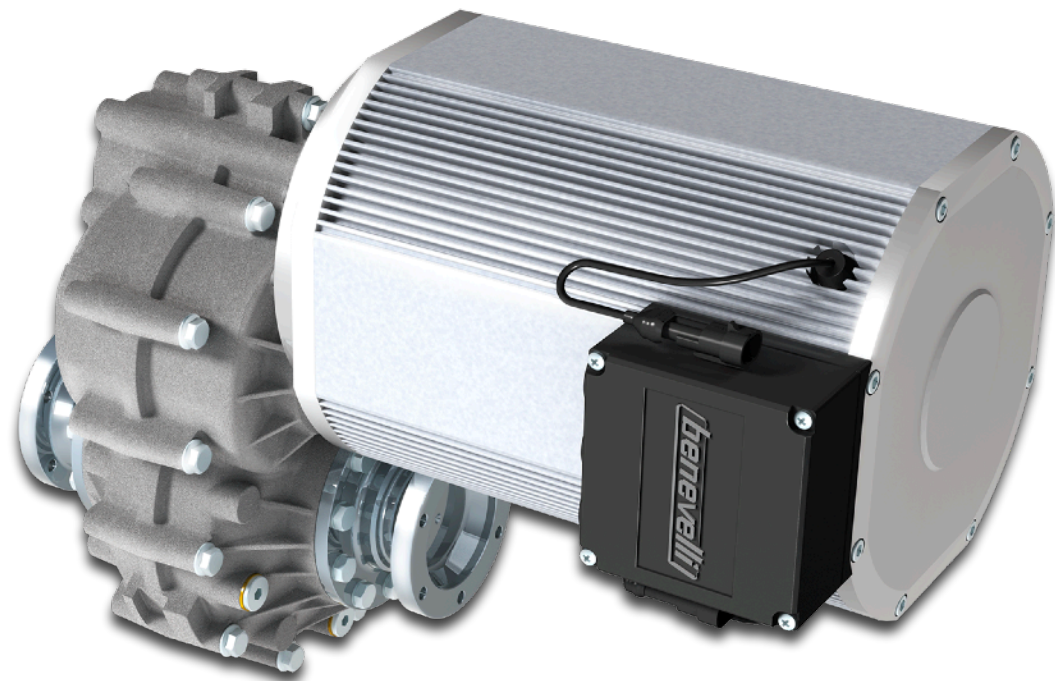


TX2 PLUS SERIE - TRANSFER CASE VERSION



3D VIEWER

GEARBOX FEATURES

Gear Ratios	i	3 - 5
Output Torque	Nm	1.600
Input Speed (Max)	Rpm	7.200
Static Load	kg	—
Axle Type		—
Track-width	mm	—
Efficiency (Mechanical)	%	95
Gears Finishing		Class 5
Differential Type		No Differential
Differential Lock		—
Service Brakes		—
Fixation System		—
Wheels Fitting		—

ELECTRIC MOTOR FEATURES

Motor Type		AMAC Serie - AC Induction	SMAC Serie - PMAC (IPM)
Power Range (Continuous)	kW	3,0 ÷ 19,0	5,0 ÷ 30,0
Power Range (Peak)	kW	Up to 30,0	Up to 60,0
Rated Voltage	V	24 ÷ 650	24 ÷ 650
IP Rating	IP	20 - 54 - 66 - 67 - 6k9k	20 - 54 - 66 - 67 - 6k9k
Motor Feedback		Hall effect 64 pulse	SinCos (resolver option)
Thermal Class		F	F
Thermal Protection		KTY 84-130	KTY 84-130
Connections		Terminal box (flying cables option)	Terminal box (flying cables option)
Cooling		Self Cooled or Liquid Cooled	Self Cooled or Liquid Cooled
Parking/Safety Brake		Electromagnetic	Electromagnetic
Braking Torque	Nm	20 ÷ 100	20 ÷ 100
Manual Release		Option	Option

CATALOG DRAWINGS ARE REPRESENTATIVE.
BEFORE FINAL DESIGN, REQUEST A CERTIFIED DRAWING.