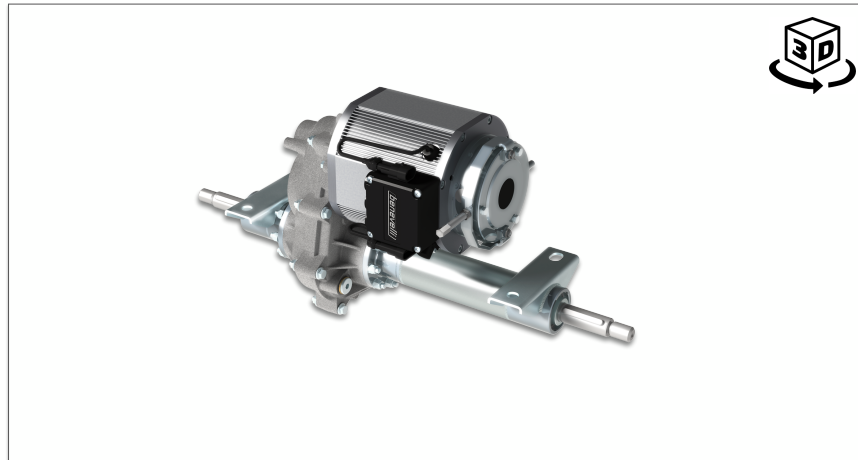


Rigid Axle Version

TX1 TX1 TX1 TX1 TX1 **TX1** TX1 TX1 TX1 TX1



Gearbox	Gear Ratios	i	6 - 10 - 12 - 16 - 19 - 22 - 24 - 28 - 32	
	Output Torque	Nm	600	
	Input Speed (Max)	Rpm	7.000	
	Static Load	kg	600	
	Axle Type		Semi floating keyed axle-shafts	
	Track-width	mm	400 ÷ 1380	
	Efficiency (Mech)	%	95	
	Gears Finishing		Class 5	
	Differential Type		Open type with four pinions	
	Differential Lock		Mechanical (option)	
	Service Brakes		n/a	
	Fixation System		Mounting brackets	
	Wheels Fitting		Keyed axle-shafts	
Motor	Motor Type		AMAC Serie	SMAC Serie
	Motor Technology		AC Induction	Synchronous IPM
	Power Range (Rated)	kW	0,6 ÷ 1,7	1,5 ÷ 3,2
	Power Range (Peak)	kW	Up to 3,2	Up to 10,0
	Rated Voltage	V	24 ÷ 600	24 ÷ 600
	IP Rating	IP	20 - 54 - 66 - 67	20 - 54 - 66 - 67 - 6K9K
	Motor Feedback		Hall effect 64 pulses	SinCos (resolver option)
	Thermal Class		F	F
	Thermal Protection		PTY 84-130	PTY 84-130
	Connections		Terminal box	Terminal box
	Parking/Safety Brake		Electromagnetic	Electromagnetic
	Braking Torque	Nm	6 ÷ 20	6 ÷ 20
Brakes	Manual Release		Option	Option
	Brake Fluid Type		n/a	
	Brake Cylinder Ø	mm	n/a	
	Volume Displ.	Cc	n/a	
	Braking Torque	Nm	n/a	
	Input Pressure	bar	n/a	
	Brake Shoes	mm	n/a	
	Brake Linings		n/a	
	Adjusting system		n/a	